



RESEARCH REPORT ON

Bajaj Holdings & Investment Limited

KEY PEOPLE : Shekhar Bajaj

FOUNDED : 1926

HEADQUATER : Mumbai, Maharashtra, India

DATE OF REPORT : 07/08/2025

About Bajaj Holdings & Investment Limited

Bajaj Holdings & Investment Limited is a part of the Bajaj Group and acts as a holding and investment company. It holds significant stakes in group companies like Bajaj Auto and Bajaj Finserv. The company generates income primarily from dividends, interest, and investment profits..

CASH CALL – BUY Bajaj Holdings & Investment Limited

BUY AT 14040
TGT 15444
SL 12636

Mr. Kundan Mishra

Research Analyst

CASH CALL

BUY AT 14040
TGT 15444
SL 12636

COMPANY OVERVIEW

Market cap	₹ 1,57,047 Cr
Face value(Rs)	₹ 10.0
P/E ratio	22.5
Book value	₹ 5,633
52 week high	₹ 14,873
52 week low	₹ 9,016
Return on Equity(RO E)	11.0 %

IMPORTANT NEWS

Particulars	Amount (₹ in Lakhs)
Mar-25	9,072.00
Jun-25	2,03,574.00
Growth (%)	2,143% 🚀
Total Market Cap (₹ Cr.)	1,55,298.96

Bajaj Holdings & Investment Limited reported a remarkable 2,143% YoY growth in Q1 FY26, with total income surging from ₹9,072 lakhs in Mar-25 to ₹2,03,574 lakhs in Jun-25. Strong dividend income and investment gains contributed to this stellar performance.

Key Points of Bajaj Holdings & Investment Limited

1. 🏢 Part Of The Bajaj Group, One Of India's Oldest And Most Respected Business Conglomerates
2. 📁 Core Business: Acts As A Holding And Investment Company
3. 🏠 Major Holdings Include Significant Stakes In Bajaj Auto And Bajaj Finserv
4. 💰 Revenue Source: Primarily Earns From Dividends, Interest Income, And Capital Gains
5. 📅 Incorporated In 1945, Originally As Bajaj Auto Limited
6. 🔄 Demerger In 2008 Created Bajaj Holdings As A Separate Entity
7. 🏠 Maintains A Conservative Investment Philosophy, Focused On Long-Term Value
8. 📈 Strong Financials With Consistent Profits And High Return On Equity
9. 🌱 Also Invests In Equity, Debt, Mutual Funds, And Startup Ventures
10. 📍 Headquartered In Pune, Maharashtra, India

Bajaj Holdings & Investment Limited by Mutual Fund 5 Last Quarter

	Feb 2025 No. of shares	June 25 No. of shares
TOTAL	6,636,955	6,714,613

NOTE:-

For schemes that have not disclosed the number of shares, the same has been calculated on the basis of the closing price of the stock on the BSE/NSE as on the portfolio date. The increase/decrease in the share quantity besides the fund buying or selling the shares from the market, could also be due to any bonus, split, rights, or restructuring in the company.

Financial highlights of Bajaj Holdings & Investment Limited

Financial highlights refers to a section appearing in an annual report that includes a multi-year comparison of operating and business metrics. Financial highlights are often times the first section appearing in an annual report, providing investors with an at-a-glance view of the company's recent performance.

The information contained in an annual report is normally audited by the company's accounting firm and includes financial highlights, a Chairperson's Letter as well as the Form 10-K. The financial highlights section of the report usually contains performance over the last several years in addition to the percentage change in each metric overtime.

P/E	47.87
P/B	7.29
No. of Shares	11.13 Cr
Enterprise Value	₹ 92,482.06 Cr
Div. Yield	0.68 %
EPS (TTM)	₹ 293.06
Sales Growth	-51.39
Profit Growth	-55.40 %

Key Ratio of Bajaj Holdings & Investment Limited

Key ratio of Bajaj Holdings & Investment Limited

Limited specifically designed to help traders gauge the overall sentiment (mood) of the market. The ratio is calculated either on the basis of options trading volumes or on the basis of the open interest for a particular period. If the ratio is more than 1, it means that more puts have been traded during the day and if it is less than 1, it means more calls have been traded. The PCR can be calculated for the options segment as a whole, which includes individual stocks as well as indices.

Financial ratios are important tools for quantitative analysis. Certain ratios are available to evaluate both short and long-term financial and operational performance, making them useful at identifying trends in the business and providing warning signs when it may be time to make a change. There are also specific ratios that can measure important variables essential to one industry or another. By evaluating particular ratios, a business can benchmark itself against similar companies and understand its strengths, weaknesses, threats and areas of opportunity.

Price to Earning	23.66
Price to Book	2.29
Price to Sales	225.39
Shareholders Equity	83.29
Return On Equity	11.21
Return On Asset	9.30
Net Profit Margin	952.73
Operating Profit Margin	90.27
EBITDA Margin	975.73
Debt to Equity Ratio	0
Cash Ratio	1.16
Quick Ratio	0

Key Technical Indicators of Bajaj Holdings & Investment Limited

Technical indicators are heuristic or pattern-based signals produced by the price, volume and/or open interest of a security or contract used by traders who follow technical analysis.

In general, technical indicators fit into five categories: trend, mean reversion, relative strength, volume, and momentum.

Leading indicators attempt to predict where the price is headed while lagging indicators offer a historical report of background conditions that resulted in the current price being where it is.

ADX	16.77 (11.92, 18.9)
MACD	-21.17 (27.3)
CMF	0.09
Super Trend	13183.7
Parabolic SAR	14250
Aroon Ind	35.71
ROC	-3.29
PVO	-11.41 (-12.49)
PPO	-0.15 (0.2)

Key Moving Average of Bajaj Holdings & Investment Limited

A moving average (MA) is a stock indicator that is commonly used in technical analysis. The reason for calculating the moving average of a stock is to help smooth out the price data over a specified period of time by creating a constantly updated average price.

A simple moving average (SMA) is a calculation that takes the arithmetic mean of a given set of prices over the specific number of days in the past; for example, over the previous 15, 30, 100, or 200 days.

Exponential moving averages (EMA) is a weighted average that gives greater importance to the price of a stock on more recent days, making it an indicator that is more responsive to new information.

EMA 5	13806
EMA 10	13878.1
EMA 15	13911.7
EMA 20	13924.1
EMA 50	13729.6
EMA 100	13183
EMA 200	12248.4

SMA 5	13854
SMA 10	13900.8
SMA 15	13939.9
SMA 20	13967.9
SMA 50	13932.1
SMA 100	13076.5
SMA 200	12092

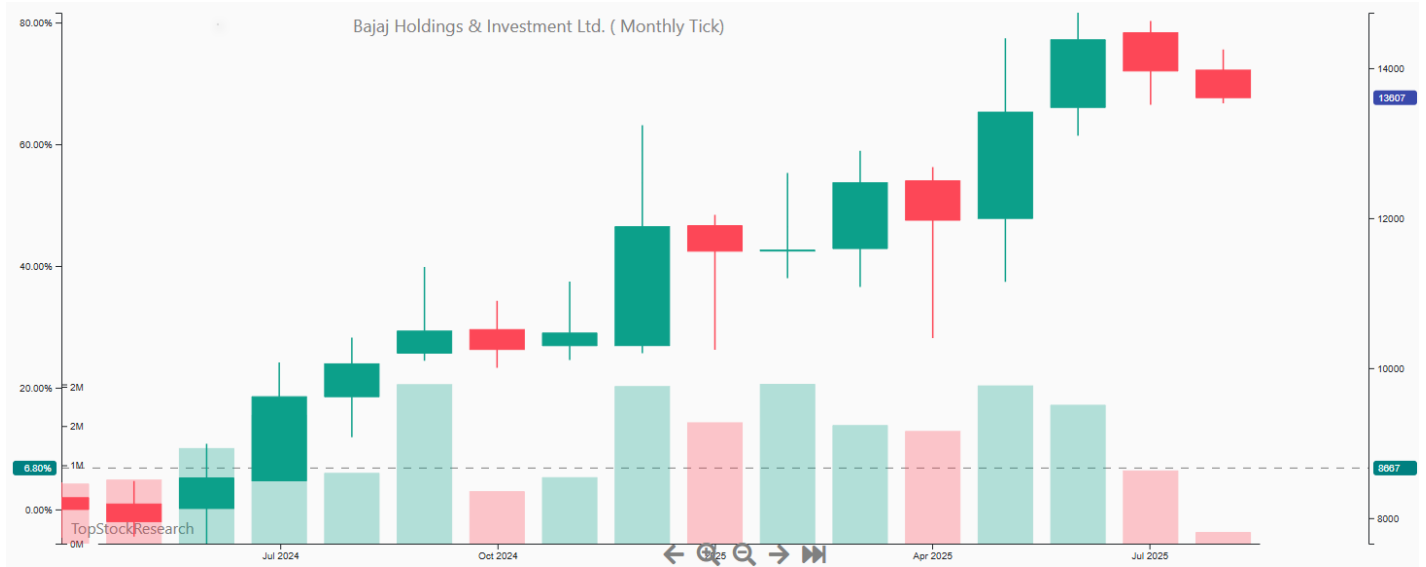
Daily Candle Stick Chart Pattern



Weekly Candle Stick Chart Pattern



Monthly Candle Stick Chart Pattern



Bajaj Holdings & Investment Limited Mutual Fund Holdings

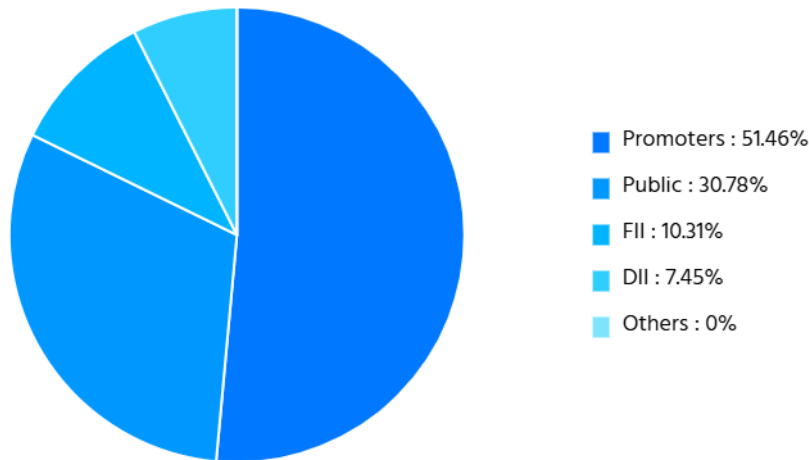
Pivot	S2	S 1	Pivot point	R 1	R 2
Fibonacci	13430.23	13534.77	13704.00	13873.23	13977.77

S1 – First Support Level, R1 - First Resistance Level, S2 – Second Support Level, R2 – SecondResistance Level

Bajaj Holdings & Investment Limited Technical Views

50 Day EMA	Close is Above EMA 50 (Short Term)	Bullish
100 Day EMA	Close is Above EMA 100 (Mid Term)	Bullish
200 Day EMA	Close is Above EMA 200 (Long Term)	Bullish
MACD (12 26 9)	MACD Line is Less Then SIGNAL Line	Bearish
RSI (14)	RSI is Below 30	Over Sold
MFI (14)	MFI is Below 20	Over Sold
CCI (20)	CCI is Below -100	Over Sold
WILLIAM %R (14)	William %R is Below -80	Over Sold
ADX (14)	ADX is Above 20 & +DI is Below -DI	Down Trend
PSAR	Stoploss For Long Buy	2954.98
10 Day Avg Volume	Traded 39.74 % More then 10 Day Average Volume	

Shareholding Pattern of Bajaj Holdings & Investment Limited



Peers Comparison of Bajaj Holdings & Investment Limited

COMPANY	PRICERs.	MCAPCr.	P/B	P/E	EPSRs.	ROE%	ROCE%	P/S	EV/EBITDA
Bajaj Finance	869.25	5,40,176.86	5.89	31.06	27.99	21.08	12.3	9.1	19.98
JIO Financial Serv.	321.6	2,04,321.62	8.15	372.44	0.86	2.22	2.64	253.64	311.49
Bajaj Hold & Invest	14,029	1,56,133.67	7.29	47.87	293.06	6.76	7.4	103.21	93.72
Chola Invest & Fin.	1,460.40	1,22,850.06	5	27.59	52.93	19.89	10.34	4.77	14.96
Shriram Finance	620.5	1,16,701.35	2	11.75	52.83	18.64	11.86	2.79	10.51
Muthoot Finance	2,612.40	1,04,879.63	3.69	20.17	129.54	17.86	13.15	8.3	12.11
SBI Cards AndPayment	792.8	75,437.12	5.27	40.17	19.73	14.83	11.79	4.17	20
Aditya Birla Capital	275.3	71,881.40	2.81	41.17	6.69	12.67	9.5	4.66	27.33

Share Price History of Bajaj Holdings & Investment Limited

Date	Price	Open	High	Low	Vol.	Change %
7/8/2025	14,211.00	14,000.00	14,242.00	13,744.00	93.08K	4.44%
6/8/2025	13,607.00	13,900.00	13,974.00	13,531.00	49.94K	-1.83%
5/8/2025	13,861.00	13,964.00	13,987.00	13,800.00	22.44K	-0.27%
4/8/2025	13,899.00	13,715.00	14,250.00	13,641.00	48.90K	0.37%
1/8/2025	13,848.00	13,975.00	14,034.00	13,781.00	21.39K	-0.82%
31-07-2025	13,963.00	13,844.00	14,061.00	13,844.00	27.34K	-0.68%
30-07-2025	14,059.00	14,099.00	14,119.00	13,903.00	17.41K	-0.02%
29-07-2025	14,062.00	13,804.00	14,117.00	13,562.00	47.61K	1.88%
28-07-2025	13,802.00	13,900.00	14,149.00	13,511.00	50.92K	-0.36%
25-07-2025	13,852.00	14,150.00	14,150.00	13,675.00	83.67K	-2.21%
24-07-2025	14,165.00	14,033.00	14,204.00	13,901.00	108.16K	1.37%
23-07-2025	13,973.00	14,172.00	14,172.00	13,939.00	21.61K	-0.69%
22-07-2025	14,070.00	14,100.00	14,107.00	13,949.00	22.96K	0.25%
21-07-2025	14,035.00	13,940.00	14,100.00	13,763.00	61.97K	1.35%
18-07-2025	13,848.00	14,100.00	14,146.00	13,800.00	24.71K	-1.79%
17-07-2025	14,100.00	14,161.00	14,161.00	14,022.00	14.43K	0.04%
16-07-2025	14,095.00	14,164.00	14,220.00	14,050.00	30.79K	-0.49%
15-07-2025	14,164.00	14,220.00	14,350.00	14,008.00	39.81K	0.11%
14-07-2025	14,148.00	13,805.00	14,299.00	13,659.00	57.80K	2.88%
11/7/2025	13,752.00	13,950.00	14,100.00	13,710.00	21.53K	-0.89%
10/7/2025	13,875.00	13,862.00	13,916.00	13,740.00	22.68K	0.09%
9/7/2025	13,862.00	13,951.00	13,972.00	13,701.00	33.06K	-0.14%
8/7/2025	13,882.00	14,332.00	14,346.00	13,850.00	35.63K	-2.84%
7/7/2025	14,288.00	14,291.00	14,349.00	14,105.00	21.15K	0.43%

Disclaimer

The information and views in this report, Our website & all the service we provide are believed to be reliable, But we do not accept any responsibility (or liability) for errors of fact or opinion. Users have the right to choose the product/s that suits them the most. Investment in stocks has its own risks. Sincere efforts have been made to present the right investment perspective. The information contained here in is based on analysis and up on sources that we consider reliable. We, However, do not vouch for the accuracy for the completeness thereof. This material is for personal information and we are not responsible for any loss incurred based upon it and takes no responsibility whatsoever for any financial profits or loss which may arise from the recommendations above. The stock price projections shown are not necessarily indicative of future price performance. The information herein, Together with all estimates and forecasts, can change without notice. Research Aim does not support to be an invitation or any offer to buy or sale any financial Instrument. Analyst or any person related to Research Aim Analyst might be holding positions in the stocks recommended. It is understood that anyone who is browsing through the site has done so at his free will and does not read any views expressed as a recommendation for which either the site or its owners or anyone can be held responsible for. Any surfing and reading of the information is the acceptance of this disclaimer.

Our Clients (Paid or Unpaid), Any third party or anyone else have no rights to forward or share our calls or SMS or report or any information provided by us to/ with anyone which is received directly or indirectly by them. If found so then serious legal actions can be taken. Any surfing and reading of the information is the acceptance of this disclaimer.

“DO NOT TRADE WITHOUT CONSULTING YOUR FINANCIAL ADVIOR TO AVOID MARKET RISK AND LOSS.”