



RESEARCH REPORT ON

Fortis Healthcare Limited

KEY PEOPLE : Ravi Rajagopal (Chairman)

FOUNDED : ₹ 1996

HEADQUATER : Gurgaon, India

REVENUE: ₹7,783 crore

DATE OF REPORT : 07/08/2025

About Fortis Healthcare Limited

Fortis Healthcare Limited is a leading Indian hospital chain, headquartered in Gurugram. Established in 1996, it operates around 36 healthcare facilities across India and abroad. Fortis offers a wide range of services including hospital care, diagnostics, and day-care specialties. It is known for clinical excellence and is backed by global healthcare group IHH Healthcare Berhad.

CASH CALL – BUY Fortis Healthcare Limited

**BUY AT 884
TGT 972
SL 796**

Mr. Kundan Mishra

Research Analyst

CASH CALL

**BUY AT 884
TGT 972
SL 796**

COMPANY OVERVIEW

Market cap	₹ 66,859 Cr
Face value(Rs)	₹ 10.0
P/E ratio	72.6
Book value	₹ 118
52 week high	₹ 903
52 week low	₹ 480
Return on Equity(RO E)	10.1 %

IMPORTANT NEWS

Fortis Healthcare Limited – Q1 FY26 Update

Metric	Value
Total Market Cap (₹ Cr.)	67,383.79
Net Profit (Mar-25)	-4,223.00 lakhs
Net Profit (Jun-25)	5,188.00 lakhs
YoY Growth (%)	222% ↗

Fortis Healthcare Limited reported a sharp turnaround in Q1 FY26 with a net profit of ₹5,188 lakhs, compared to a loss of ₹4,223 lakhs in Q4 FY25. This marks a strong 222% YoY growth, reflecting robust operational performance and improved patient volumes.

Key Points of Fortis Healthcare Limited

1. Leading hospital chain in India providing integrated healthcare services
2. Established in 1996 with the first hospital launched in Mohali in 2001
3. Operates across India, UAE, and Sri Lanka
4. Majority stake held by Malaysia-based IHH Healthcare Berhad
5. Achieved strong recovery in Q1 FY26 with ₹5,188 lakhs net profit
6. Market capitalization stands at ₹67,383.79 crore
7. Operates over 36 hospitals and healthcare facilities
8. Fortis Memorial Research Institute (FMRI), Gurugram is its flagship hospital
9. Recognized for clinical excellence and patient-centric care
10. Expanding focus on diagnostics and day-care specialty services

Fortis Healthcare Limited by Mutual Fund 5 Last Quarter

	Feb 2025 No. of shares	June 25 No. of shares
TOTAL	196,769,042	193,638,314

NOTE:-

For schemes that have not disclosed the number of shares, the same has been calculated on the basis of the closing price of the stock on the BSE/NSE as on the portfolio date. The increase/decrease in the share quantity besides the fund buying or selling the shares from the market, could also be due to any bonus, split, rights, or restructuring in the company.

Financial highlights of Fortis Healthcare Limited

Financial highlights refers to a section appearing in an annual report that includes a multi-year comparison of operating and business metrics. Financial highlights are often times the first section appearing in an annual report, providing investors with an at-a-glance view of the company's recent performance.

The information contained in an annual report is normally audited by the company's accounting firm and includes financial highlights, a Chairperson's Letter as well as the Form 10-K. The financial highlights section of the report usually contains performance over the last several years in addition to the percentage change in each metric overtime.

P/E	753.31
P/B	7.33
No. of Shares	75.50 Cr.
Enterprise Value	₹ 68,656.18 Cr
Div. Yield	0.11 %
EPS (TTM)	₹ 1.18
Sales Growth	22.39%
Profit Growth	-68.02 %

Key Ratio of Fortis Healthcare Limited

Key ratio of Fortis Healthcare Limited

Limited specifically designed to help traders gauge the overall sentiment (mood) of the market. The ratio is calculated either on the basis of options trading volumes or on the basis of the open interest for a particular period. If the ratio is more than 1, it means that more puts have been traded during the day and if it is less than 1, it means more calls have been traded. The PCR can be calculated for the options segment as a whole, which includes individual stocks as well as indices.

Financial ratios are important tools for quantitative analysis. Certain ratios are available to evaluate both short and long-term financial and operational performance, making them useful at identifying trends in the business and providing warning signs when it may be time to make a change. There are also specific ratios that can measure important variables essential to one industry or another. By evaluating particular ratios, a business can benchmark itself against similar companies and understand its strengths, weaknesses, threats and areas of opportunity.

Price to Earning	84.52
Price to Book	7.48
Price to Sales	8.41
Shareholders Equity	65.12
Return On Equity	9.69
Return On Asset	5.74
Net Profit Margin	9.95
Operating Profit Margin	58.54
EBITDA Margin	19.81
Debt to Equity Ratio	0.278
Cash Ratio	0.316
Quick Ratio	1.27

Key Technical Indicators of Fortis Healthcare Limited

Technical indicators are heuristic or pattern-based signals produced by the price, volume and/or open interest of a security or contract used by traders who follow technical analysis.

In general, technical indicators fit into five categories: trend, mean reversion, relative strength, volume, and momentum.

Leading indicators attempt to predict where the price is headed while lagging indicators offer a historical report of background conditions that resulted in the current price being where it is.

ADX	36.93 (23.49, 9.16)
MACD	23.23 (21.53)
CMF	0.24
Super Trend	804.28
Parabolic SAR	843.46
Aroon Ind	78.57
ROC	6.06
PVO	-4.78 (-1.01)
PPO	2.82 (2.66)

Key Moving Average of Fortis Healthcare Limited

A moving average (MA) is a stock indicator that is commonly used in technical analysis. The reason for calculating the moving average of a stock is to help smooth out the price data over a specified period of time by creating a constantly updated average price.

A simple moving average (SMA) is a calculation that takes the arithmetic mean of a given set of prices over the specific number of days in the past; for example, over the previous 15, 30, 100, or 200 days.

Exponential moving averages (EMA) is a weighted average that gives greater importance to the price of a stock on more recent days, making it an indicator that is more responsive to new information.

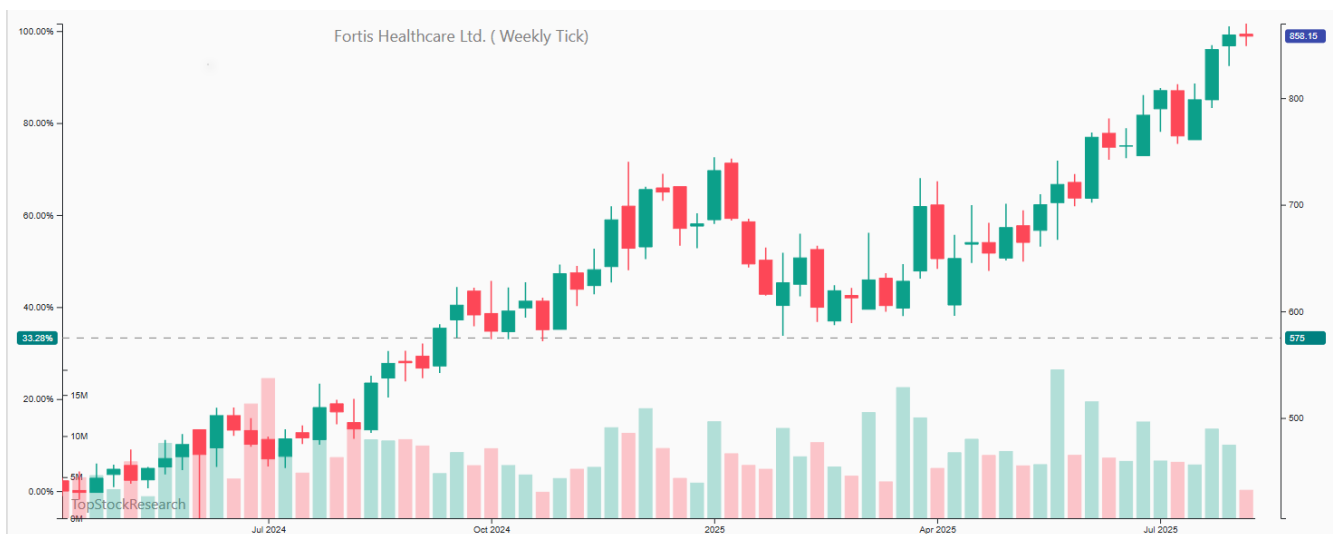
EMA 5	858.69
EMA 10	849.76
EMA 15	845.93
EMA 20	836.96
EMA 50	795.2
EMA 100	750.01
EMA 200	690.73

SMA	Value
SMA 5	866.35
SMA 10	857.43
SMA 15	843.63
SMA 20	830.3
SMA 50	792.53
SMA 100	730.17

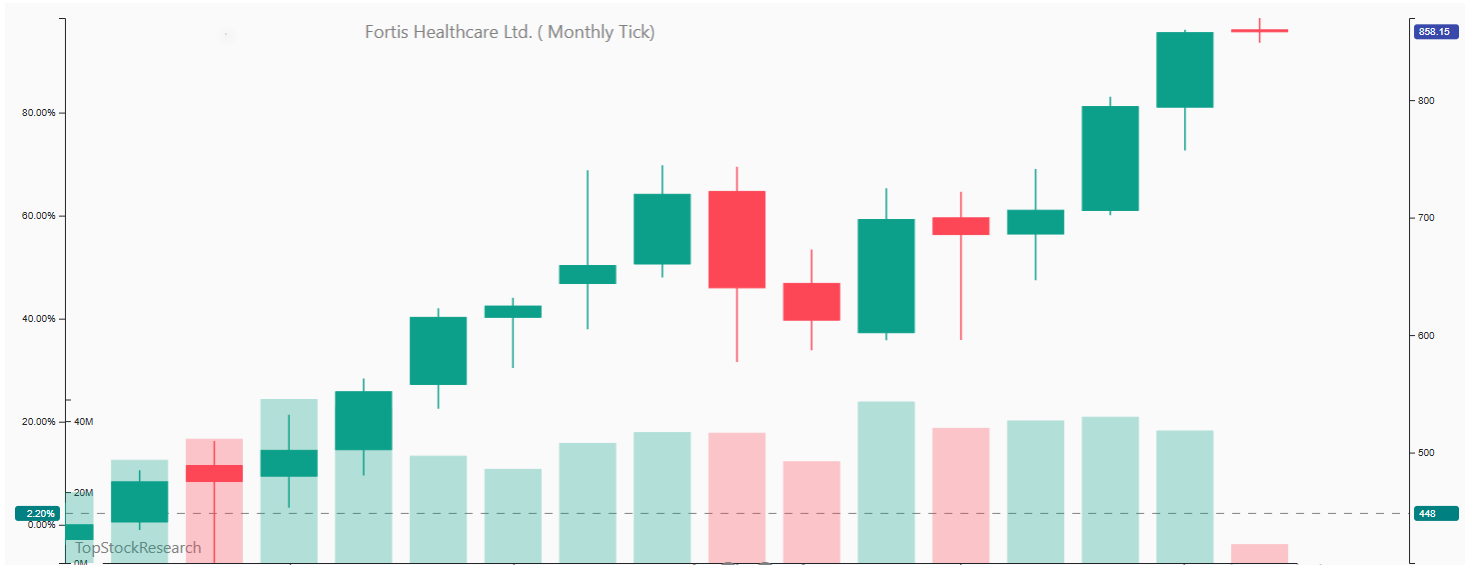
Daily Candle Stick Chart Pattern



Weekly Candle Stick Chart Pattern



Monthly Candle Stick Chart Pattern



Fortis Healthcare Limited Mutual Fund Holdings

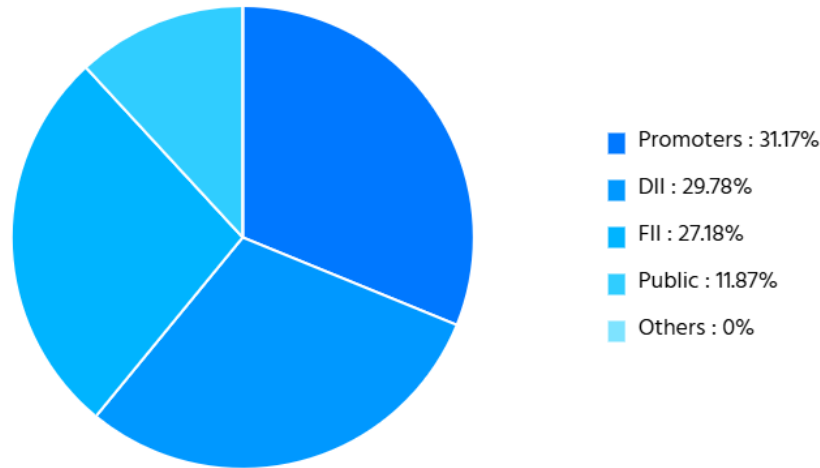
Pivot	S2	S 1	Pivot point	R 1	R 2
Fibonacci	846.10	850.90	858.65	866.40	871.20

S1 – First Support Level, R1 - First Resistance Level, S2 – Second Support Level, R2 – SecondResistance Level

Fortis Healthcare Limited Technical Views

50 Day EMA	Close is Above EMA 50 (Short Term)	Bullish
100 Day EMA	Close is Above EMA 100 (Mid Term)	Bullish
200 Day EMA	Close is Above EMA 200 (Long Term)	Bullish
MACD (12 26 9)	MACD Line is Less Then SIGNAL Line	Bearish
RSI (14)	RSI is Below 30	Over Sold
MFI (14)	MFI is Below 20	Over Sold
CCI (20)	CCI is Below -100	Over Sold
WILLIAM %R (14)	William %R is Below -80	Over Sold
ADX (14)	ADX is Above 20 & +DI is Below -DI	Down Trend
PSAR	Stoploss For Long Buy	144.93
10 Day Avg Volume	Traded 1.72 % More then 10 Day Average Volume	

Shareholding Pattern of Fortis Healthcare Limited



Peers Comparison of Fortis Healthcare Limited

Max Healthcare Inst	1,245.40	1,21,071.17	14.82	172.69	7.21	8.88	11.84	45.45	101.03
Apollo Hospital Ent.	7,100.50	1,02,094.30	11.69	78.76	90.16	13.81	17.2	14.04	43
Fortis Healthcare	886.5	66,927.04	7.33	753.31	1.18	0.7	2.23	46.29	141.32
Narayana Hrudayalay	1,767.20	36,114.64	15.89	83.58	21.14	25.66	23.81	11.06	44.07
Global Health	1,315.50	35,359.38	10.08	76.61	17.17	13.55	18.88	15.51	40.21
Aster DM Healthcare	591	30,620.95	7.17	108.85	5.43	5.65	8.31	15.04	46.12
Krishna Inst.Medi	734.75	29,400.21	13.2	97.67	7.52	13.46	17.02	24.06	62.49
Dr. Lal Pathlabs	3,201.10	26,817.38	12.15	50.85	62.95	25.99	31.99	11.4	33.51

Share Price History of Fortis Healthcare Limited

Date	Price	Open	High	Low	Vol.	Change %
7/8/2025	14,211.00	14,000.00	14,242.00	13,744.00	93.08K	4.44%
6/8/2025	13,607.00	13,900.00	13,974.00	13,531.00	49.94K	-1.83%
5/8/2025	13,861.00	13,964.00	13,987.00	13,800.00	22.44K	-0.27%
4/8/2025	13,899.00	13,715.00	14,250.00	13,641.00	48.90K	0.37%
1/8/2025	13,848.00	13,975.00	14,034.00	13,781.00	21.39K	-0.82%
31-07-2025	13,963.00	13,844.00	14,061.00	13,844.00	27.34K	-0.68%
30-07-2025	14,059.00	14,099.00	14,119.00	13,903.00	17.41K	-0.02%
29-07-2025	14,062.00	13,804.00	14,117.00	13,562.00	47.61K	1.88%
28-07-2025	13,802.00	13,900.00	14,149.00	13,511.00	50.92K	-0.36%
25-07-2025	13,852.00	14,150.00	14,150.00	13,675.00	83.67K	-2.21%
24-07-2025	14,165.00	14,033.00	14,204.00	13,901.00	108.16K	1.37%
23-07-2025	13,973.00	14,172.00	14,172.00	13,939.00	21.61K	-0.69%
22-07-2025	14,070.00	14,100.00	14,107.00	13,949.00	22.96K	0.25%
21-07-2025	14,035.00	13,940.00	14,100.00	13,763.00	61.97K	1.35%
18-07-2025	13,848.00	14,100.00	14,146.00	13,800.00	24.71K	-1.79%
17-07-2025	14,100.00	14,161.00	14,161.00	14,022.00	14.43K	0.04%
16-07-2025	14,095.00	14,164.00	14,220.00	14,050.00	30.79K	-0.49%
15-07-2025	14,164.00	14,220.00	14,350.00	14,008.00	39.81K	0.11%
14-07-2025	14,148.00	13,805.00	14,299.00	13,659.00	57.80K	2.88%
11/7/2025	13,752.00	13,950.00	14,100.00	13,710.00	21.53K	-0.89%
10/7/2025	13,875.00	13,862.00	13,916.00	13,740.00	22.68K	0.09%
9/7/2025	13,862.00	13,951.00	13,972.00	13,701.00	33.06K	-0.14%
8/7/2025	13,882.00	14,332.00	14,346.00	13,850.00	35.63K	-2.84%
7/7/2025	14,288.00	14,291.00	14,349.00	14,105.00	21.15K	0.43%

Disclaimer

The information and views in this report, Our website & all the service we provide are believed to be reliable, But we do not accept any responsibility (or liability) for errors of fact or opinion. Users have the right to choose the product/s that suits them the most. Investment in stocks has its own risks. Sincere efforts have been made to present the right investment perspective. The information contained here in is based on analysis and up on sources that we consider reliable. We, However, do not vouch for the accuracy for the completeness thereof. This material is for personal information and we are not responsible for any loss incurred based upon it and takes no responsibility whatsoever for any financial profits or loss which may arise from the recommendations above. The stock price projections shown are not necessarily indicative of future price performance. The information herein, Together with all estimates and forecasts, can change without notice. Research Aim does not support to be an invitation or any offer to buy or sale any financial Instrument. Analyst or any person related to Research Aim Analyst might be holding positions in the stocks recommended. It is understood that anyone who is browsing through the site has done so at his free will and does not read any views expressed as a recommendation for which either the site or its owners or anyone can be held responsible for. Any surfing and reading of the information is the acceptance of this disclaimer.

Our Clients (Paid or Unpaid), Any third party or anyone else have no rights to forward or share our calls or SMS or report or any information provided by us to/ with anyone which is received directly or indirectly by them. If found so then serious legal actions can be taken. Any surfing and reading of the information is the acceptance of this disclaimer.

“DO NOT TRADE WITHOUT CONSULTING YOUR FINANCIAL ADVIOR TO AVOID MARKET RISK AND LOSS.”